

ESAM Meeting  
Phoenix – 12 May 2010



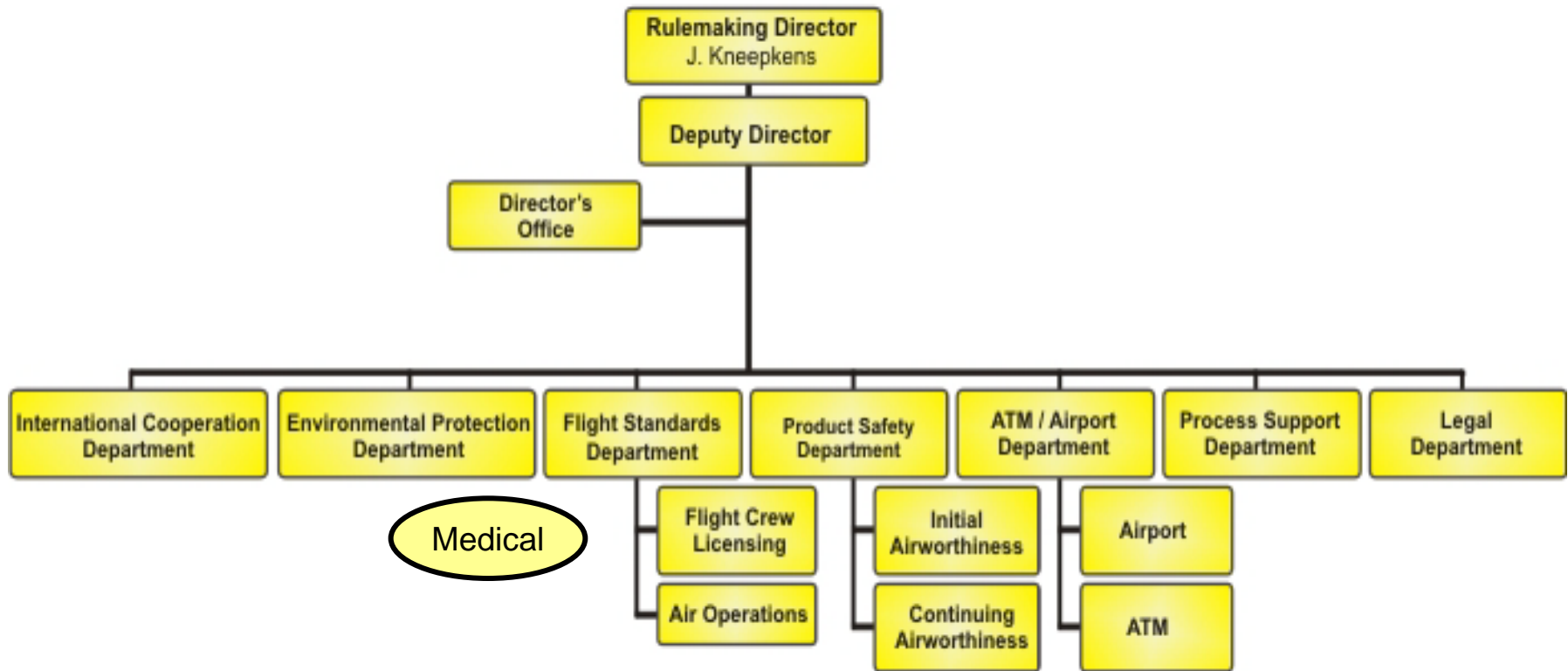
# EASA: update on Part Medical

Virgilijus Valentukevicius

---



# EASA Rulemaking Directorate





# Part Medical structure

**Annex II  
Part Medical**

Medical requirements  
for cabin crew  
will be added

**Subpart A**

**General  
Requirements**

**Subpart B**

**Requirements  
for  
medical  
certificates**

**Subpart C**

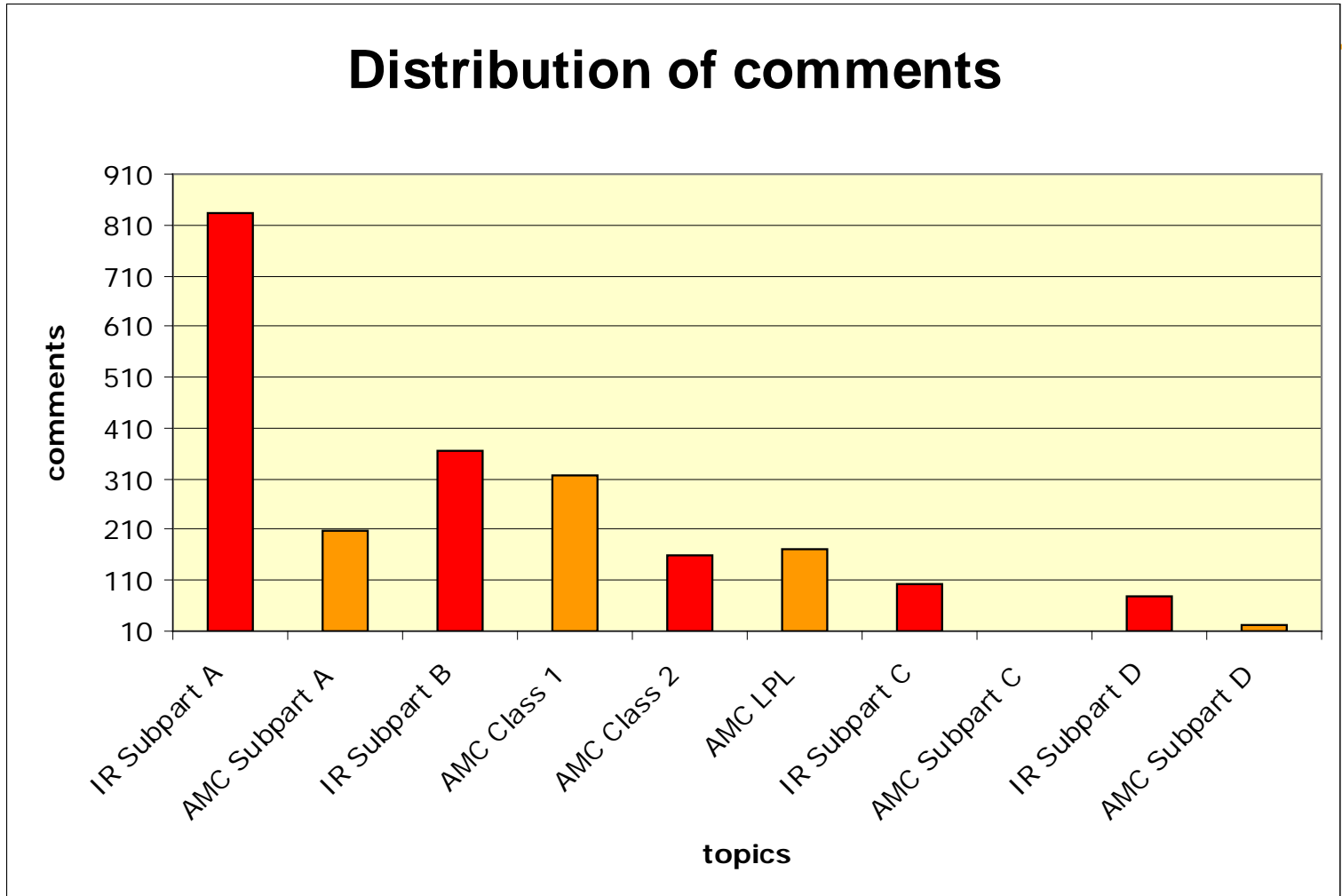
**Aeromedical  
Examiners**

**Subpart D**

**General Medical  
Practitioners**



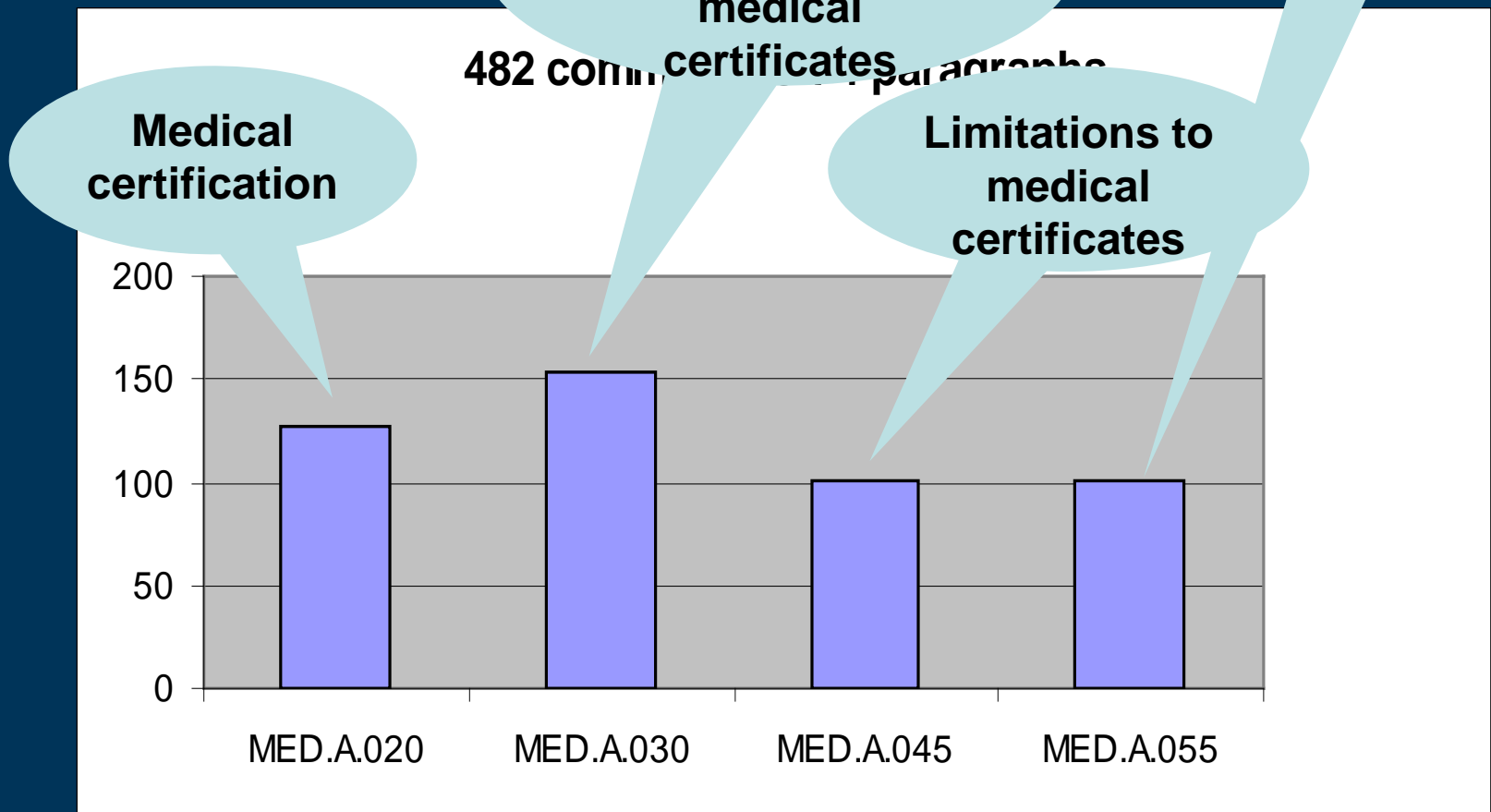
## Distribution of comments





# Subpart A – 949(834)

482 comments paragraphs





# Latest developments

---

## ➤ Limitations

- ✦ Class 1 – referral to the licensing authority
- ✦ Class 2 – in consultation with the licensing authority
- ✦ Moved to AMC except OML and OSL
- ✦ Revalidation and renewal by AeMC or AME if no change has occurred

## ➤ Medical forms

## ➤ AME application form



# Latest developments

---

- LAPL medical certificate:
  - ✦ Periods of validity
  - ✦ Medical history
  - ✦ Examination form
  - ✦ New structure of medical requirements
  - ✦ GMP declaration form
  - ✦ OPL in borderline cases



## Subpart B – 336 comments

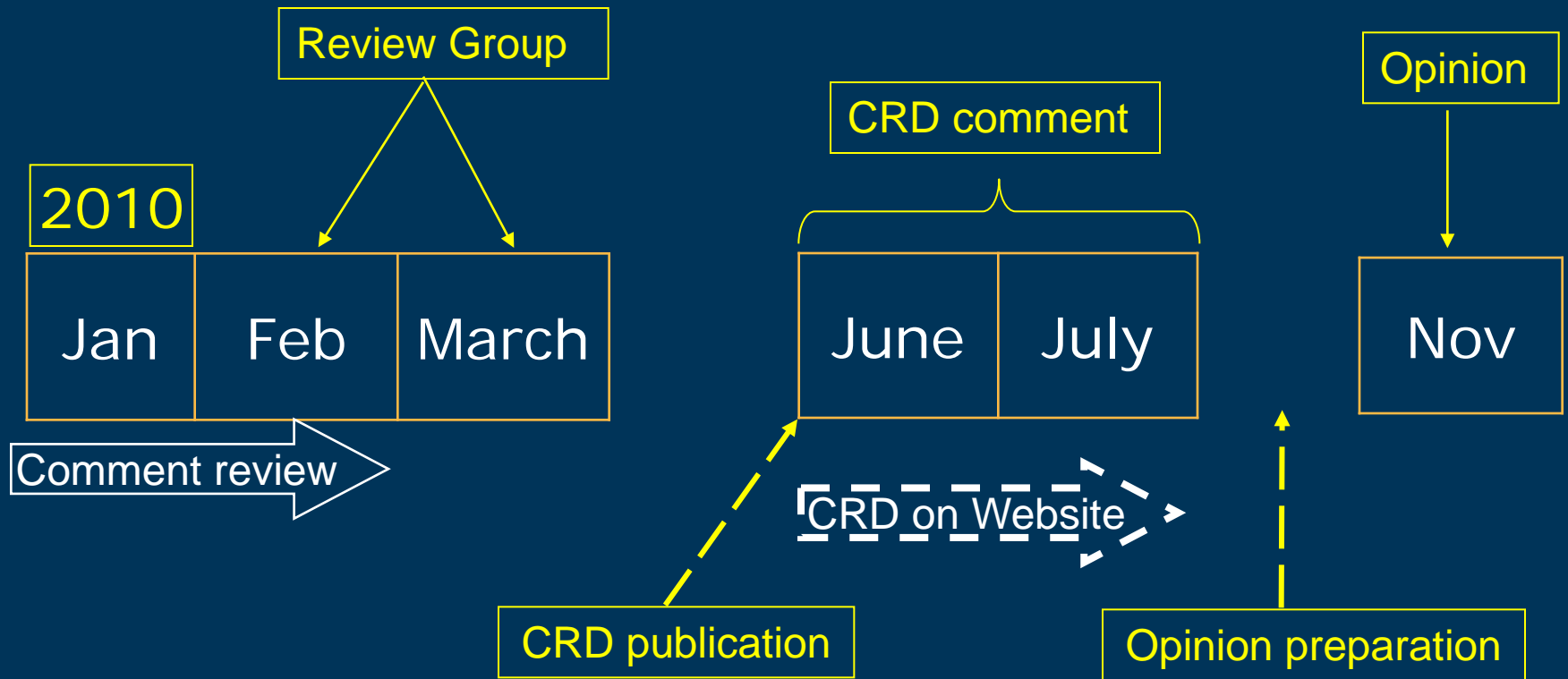
---

- 82 comments on cardiovascular system
  - ★ After comment review:
    - ➔ Anticoagulation in special cases accepted and moved to AMC
  
- 52 comments on visual system
  - ★ After comment review:
    - ➔ Myopia, astigmatism and anisometropia (initial) - for licensing authority decision
    - ➔ No pre-operative limits for myopia





# Timetable of NPA 2008-17 (FCL)





# Future Rulemaking tasks

---

- 1% rule
  - Guidelines for the:
    - ★ Aeromedical examination
    - ★ Use of medications
  - Practical AME training in AeMC
  - EU central database for:
    - ★ Registration of AMEs
    - ★ Denials of class 1 medical certificates
    - ★ AME training courses
  - Training organisations for AMEs
-



**Thank you**

**Dr. Virgilijus Valentukevicius**

**[virgilijus.valentukevicius@easa.europa.eu](mailto:virgilijus.valentukevicius@easa.europa.eu)**